

EnergyAustralia Classic Singles

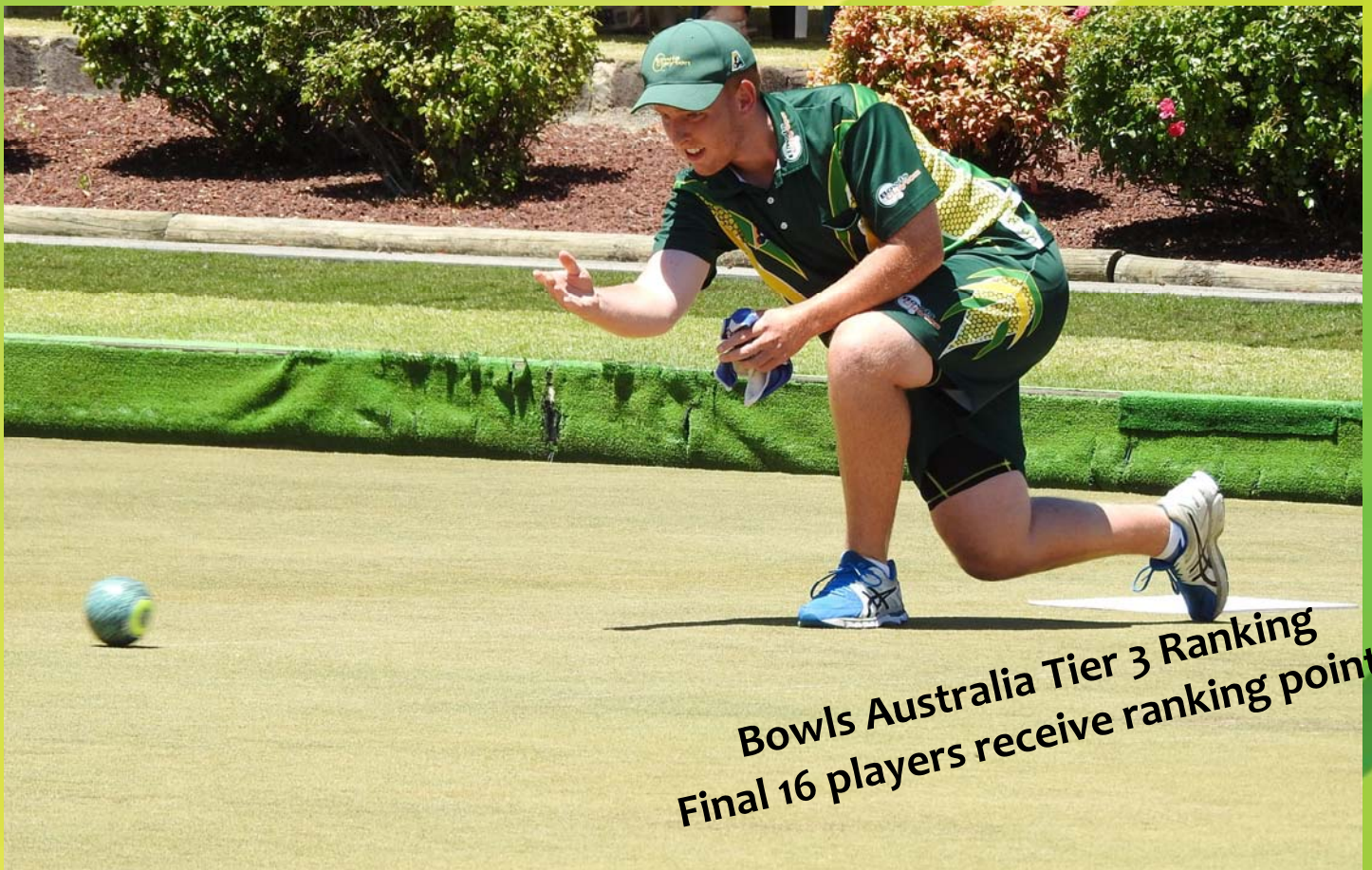
Newborough Bowling Club

Cnr Monash Rd & Coach Rd Newborough
14th—17th January 2019, 9.00 am daily

Everyone Welcome

Non-Stop Bowling Lunches BBQ Counter Teas
(5.30pm—7pm, Mon—Wed)
Club Facilities Open Every Day from 9am

Interstate
Country Victoria
Melbourne
Gippsland & Local
Bowlers
Participating
Now in its 22nd year!



Bowls Australia Tier 3 Ranking
Final 16 players receive ranking points

For further information

Contact: Michael Holroyd

Phone: 0434 146 865



EnergyAustralia

LIGHT THE WAY

EnergyAustralia Classic Singles

presented by

Newborough Bowling Club Inc

which is the new name of the Yallourn Bowling Club Inc.
situated in Monash Road, Newborough

Monday 14th January—Thursday 17th January 2019

Entries are invited for this Bowls Australia Tier 3 Tournament which provides ranking points for the last 16 players. The winner of the EnergyAustralia Singles receives \$3500 and 72 ranking points, runner up \$1500 and 48 points, losing semi finalists \$750 and 24 ranking points.

Format

Newborough Bowling Club is conducting its 22nd consecutive Classic Singles and, with Sponsor EnergyAustralia, are aiming to attract the highest quality competitors to the outstanding facilities of Newborough Bowling Club.

Bowls Australia rules and Bowls Victoria dress codes will apply.

Newborough Bowling Club endeavours to prepare the highest quality greens with two new bent greens and one tift green.

Program

This is an open event for all bowlers, with 96 bowlers competing over 4 days.

Monday 14th & Tuesday 15th January 48 players participate in 16 sections of 3 players. Each player plays the other two players in that section, with the section winner continuing to Wednesday's knock-out play.

Wednesday 16th January 32 section winners play 3 rounds of knock-out competitions.

Thursday 17th January (am) Semi-finals

Thursday 17th January (pm) Final



RSVP AS SOON AS POSSIBLE!

You are strongly advised to return your entry form with payment without delay to ensure a place in the EnergyAustralia Classic Singles. In the event of this Tournament being over subscribed, the Tournament Committee will compile a waiting list.

Following the close of entries, further information outlining your involvement in this event will be forwarded to you.

Closing Date

14 December 2018

Past Winners

- 1998 **Neville Brown** (Drouin, Vic)
- 1999 **Ray Jansen** (Kew Heights, Vic)
- 2000 **Brian Baldwin** (Musgrave Hill, Qld)
- 2001 **Don Peoples** (Birrongo, NSW)
- 2002 **Brian Baldwin** (Musgrave Hill, Qld)
- 2003 **Brian Baldwin** (Musgrave Hill, Qld)
- 2004 **Ian Caines** (Moe, Vic)
- 2005 **Rex Johnson** (St Johns Park, NSW)
- 2006 **Brett Wilkie** (Helensvale, Qld)
- 2007 **Barrie Lester** (Melbourne, Vic)
- 2008 **Shane Globits** (Helensvale, Qld)
- 2009 **Barrie Lester** (Moonee Ponds, Vic)
- 2010 **Barrie Lester** (Moonee Ponds, Vic)
- 2011 **Steve Glasson** (St Johns Park, NSW)
- 2012 **Barrie Lester** (Moonee Ponds, Vic)
- 2013 **Charlie Ward** (Frankston RSL, Vic)
- 2014 **Tony Schiavello** (Bundoora RSL, Vic)
- 2015 **Brendon Baker** (Kurri Kurri, NSW)
- 2016 **Chris Le Lievre** (Glenroy, Vic)
- 2017 **Barrie Lester** (Mulgrave CC, Vic)
- 2018 **Dylan Fisher** (Clayton, Vic)

Cover: *Dylan Fisher*
2018 Winner of Classic Singles

EnergyAustralia Classic Singles Entry Form



Please forward to:

Michael Holroyd, Tournament Secretary
PO Box 40, Newborough 3825

Closing date 14th December 2018

Please print all details clearly.

Full name

Club

can **cannot** accept your invitation to play in the EnergyAustralia Classic Singles

Address

City/town/suburb

State

Postcode

Phone

Mobile

Email

Details

Please indicate details of any Club Championships or other Tournament achievements for us to use in publicity for the event.

Sectional play preference

It will not be possible for all players to play their sectional play on the same day, it will be necessary to play on either Monday or Tuesday. Please indicate your preferred day of Sectional play. Every effort will be made to allocate your requested day of play.

Mon **Tue** **either day**

Sectional winners on Monday and Tuesday will be required to play on Wednesday.

I enclose \$50 (GST incl.) as entry fee (includes lunch on each day you play a match)

You may pay via bank transfer—BSB 083 953 / Account No. 66 081 6371 (please use your name as Reference No.)

Office use only

Cheque / Money Order

Bank Deposit

Cash

Date